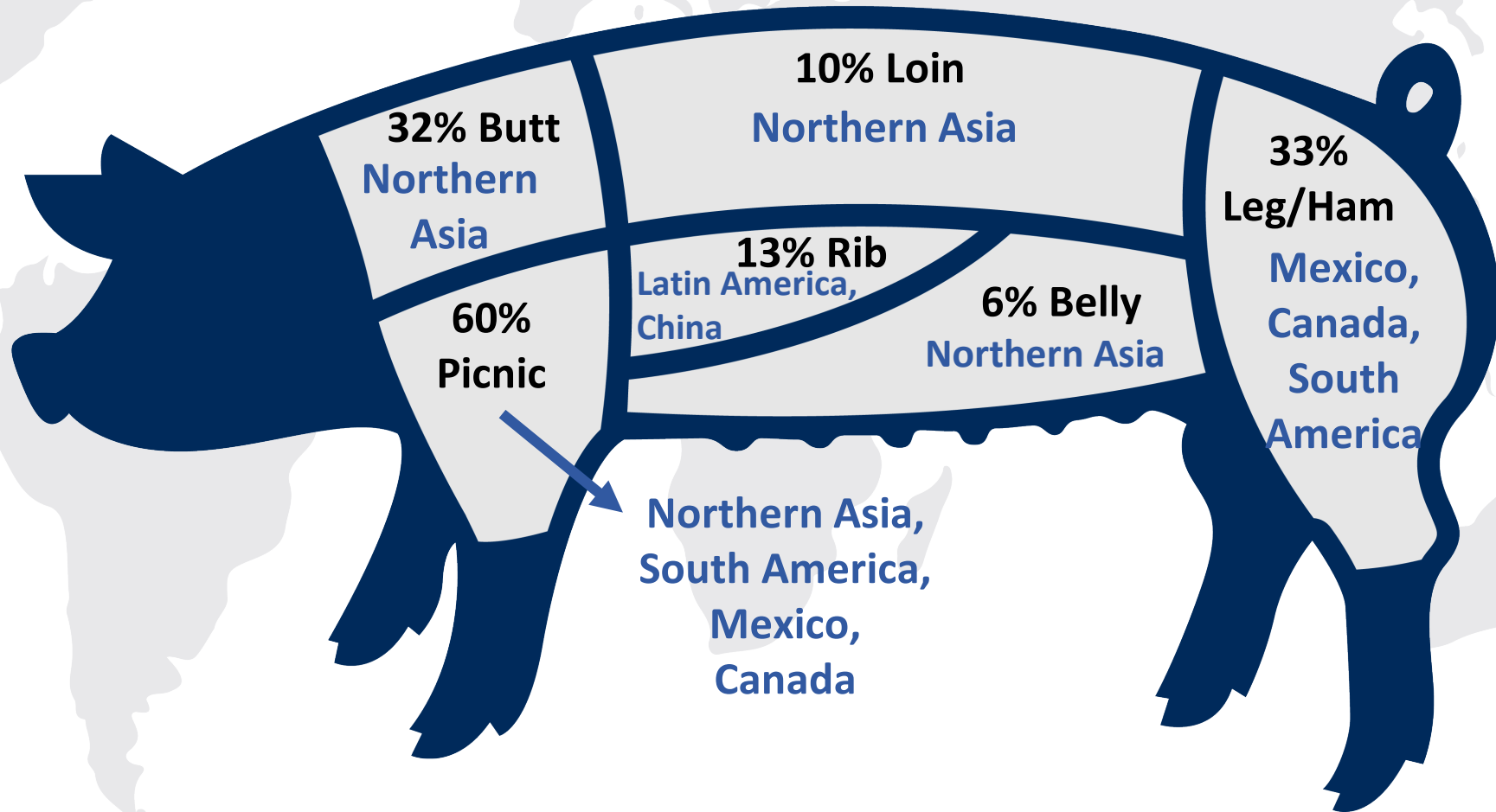
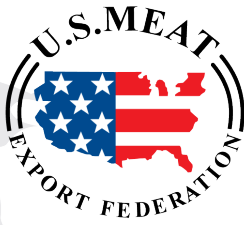


# Share of Pork Primals Exported



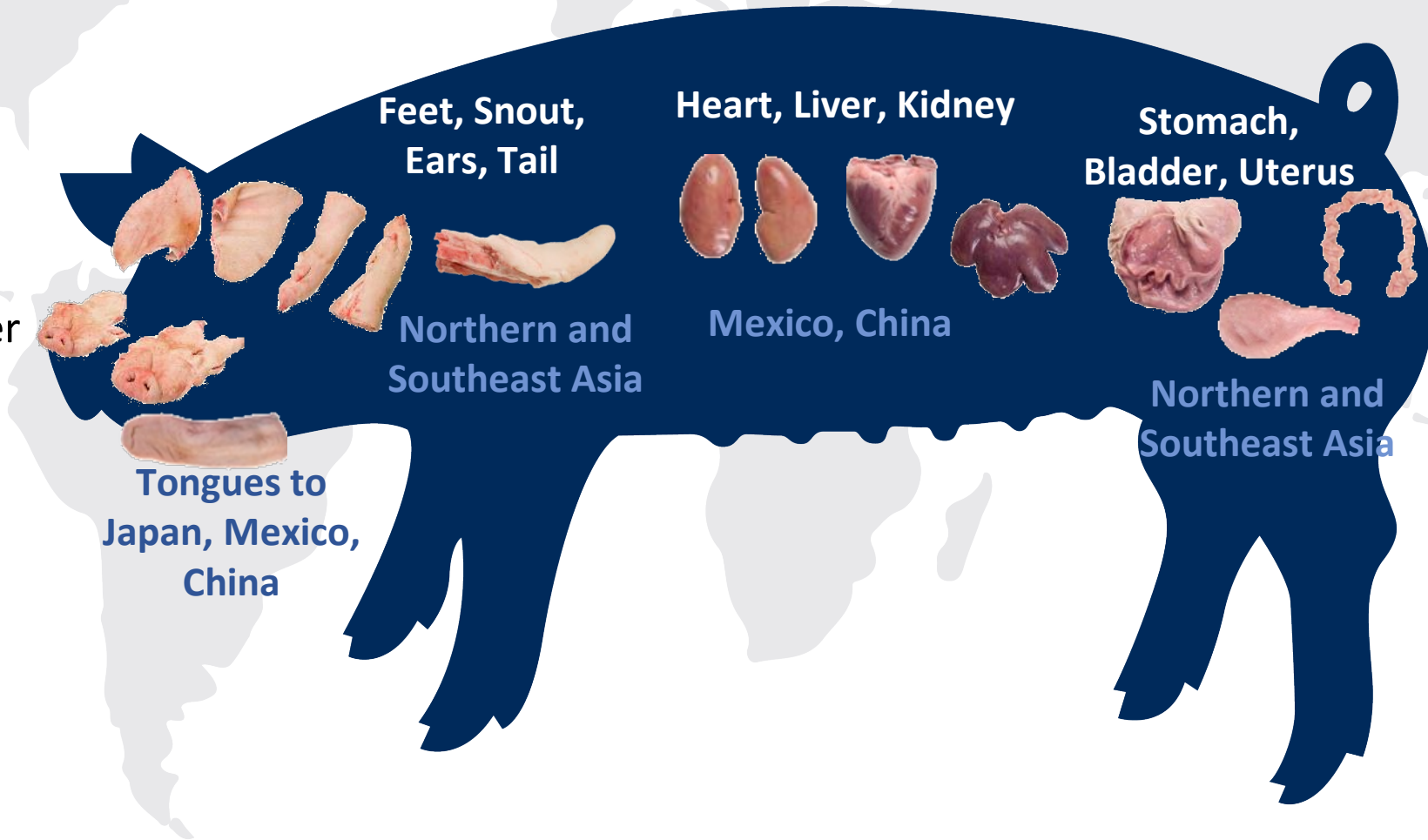
Additionally 2% of 2019 production was exported as boxed carcasses, mainly to China

# The majority of edible pork variety meats are exported



Variety meat exports equated to **8.4 pounds** per head in 2019

And value of **\$7.75** per head



**China/HK & Mexico** accounted for over **80%** of total U.S. pork variety meat export volume in 2019

**Feet** are the top item to China/HK & feet exports to China/HK averaged \$1.50 per head and 2.2 pounds per head